

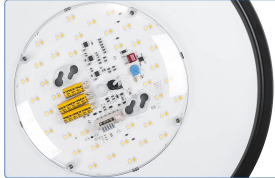
Halcon Lighting

Surface Mount Led Ceiling Light

ETL & Energy Star Certified | 5%-100% Triac Brightness Dimmable
Air Tight | IC-Rated | Suitable for Damp Locations | 5 Years Warranty



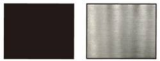
Durable Aluminum fixture



Isolated Driver with Electric-shock Prevented Circuit



Slim Body Suitable for Various Applications



Trim Colors

Black, brushed nickel trims available.



SMD2835 with LM-80

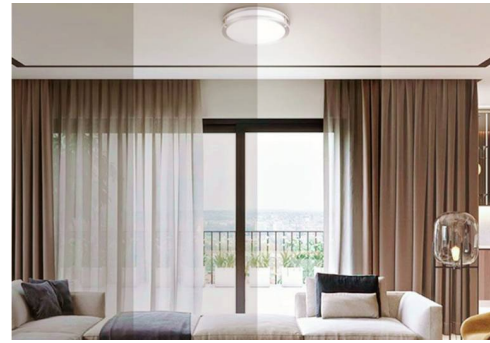
80% lasting after 50,000 hours.

Parameters

Input	AC90-130V
Power Factor	>0.9
Beam Angle	120°
Lifetime	50,000 hours

Specifications

Model	Size (inch)	Watt	Lumen	Size (mm)	CRI	Color Temperature Options
C2301-10"	10"	15W	1050lm	Φ250*H87	>80	5CCT (2700K-3000K-3500K-4000K-5000K) Single Color (2700K/3000K/3500K/4000K/5000K)
C2301-12"	12"	18W	1250lm	Φ300*H87	>80	
C2301-14"	14"	25W	2150lm	Φ356*H100	>80	
C2301-15"	15"	25W	2150lm	Φ380*H100	>80	
C2301-16"	16"	25W	2150lm	Φ410*H105	>80	
C2301-16"	16"	30W	2580lm	Φ410*H105	>80	

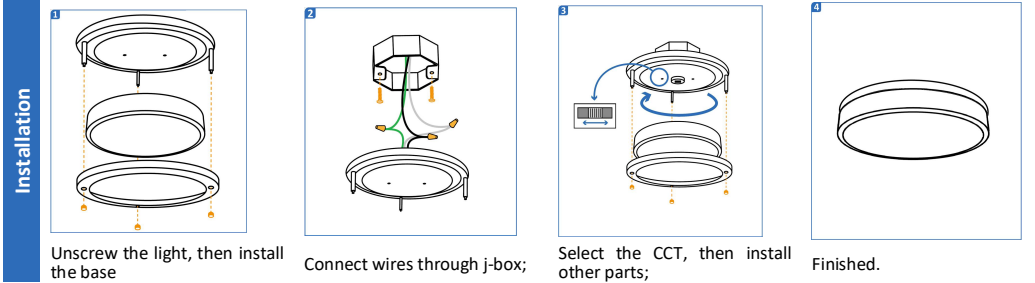


Features

- Direct contact for insulation, no housing required.
- Ultra slim fixture for joists and soffits.
- Suitable for damp locations (bathrooms, kitchens).

Advantages

- ISO: 9001 system for strict quality control.
- OEM & ODM customization available.
- 13-year R&D lighting design and manufacture.



Customization

No flicker, no noise, upgraded led driver solution

Ra >80 / >90 high CRI led chips

Smart APP Control

3CCT/4CCT/5CCT Wall Dimmer Switchable

Default Accessories



Compatible Dimmer List

* Total power of the lights should be less than 75% of the rated power of the dimmer.

Brand	Model	Load	Dimming Range	Brand	Model	Load	Dimming Range
Lutron	DV-600PR	600W	1%-100%	Lutron	NTELV-300P	600W	10%-100%
	DVCL-153P	150W	10%-100%		AYCL-153P	150W	10%-100%
	TG-600P	600W	10%-100%	Leviton	6633	600W	10%-100%
	TGCL-153P	150W	10%-100%		6674	600W	10%-100%
	CT-600P	600W	10%-100%		6602	600W	10%-100%
CTCL-153P	150W	1%-100%		IPL06	600W	1%-100%	

ZhongShan Halcon Lighting & Electrical Co., Ltd

Factory Address: No 9, ShunXing North Road, HengLan Town, ZhongShan City, GuangDong, China.

Web: www.halconlighting.com
Mail: info@halconlighting.com
Tel : 0760-87556292